

ACTION PLAN

The LTP is a long-term strategy, accompanied by an action plan of measures. An indication of priorities for different methods of travel is shown below:

- Expansion of Multi Use trail network, including completion of Tarka Trail and Drakes Trail and progressing Teign Estuary and Clyst Valley Trails
- Green lanes to deliver local priorities for walking, cycling and horse-riding
- Active Exeter: 50% of trips in the city to be made by walking and cycling
- Delivery of Bay Trails and Newton Abbot to Torbay Cycle route
- Delivery of priorities in Growth area LCWIPs



- Continued delivery of Devon Metro, including increased frequency from Exeter to East Devon, Barnstaple and 15-minute frequency to Digby & Sowton
- New stations at Cullompton, Edginswell, Monkerton and Okehampton East
- Reinstate railway from Tavistock to Plymouth
- Resilience works at Dawlish and enhanced diversionary capacity of Waterloo Line
- Increased services to London from Torbay and Okehampton/Barnstaple



- Bus priority measures in Exeter and Barnstaple
- Roll out of modern low emission buses throughout Torbay, Exeter and Barnstaple
- Bus/rail Interchange at Polsloe Bridge and Digby Park and Ride
- 15-minute frequency services between Exeter and surrounding towns
- New bus services from Torbay to East of Exeter



- Completion of North Devon Link Road and A382 enhancements
- Sherford Southern Access Route
- Dinan Way Extension
- Improve resilience of M5 between J29 – J31
- Trial reduced speed limits on strategic routes.



- Low Carbon Procurement Strategy
- Develop Low Carbon Design Toolkit
- Electric vehicle charge points and promote Peer to Peer charging
- Energy generation on Park and Ride sites
- Work towards zero-emission transport subscription service in Exeter



HOW TO RESPOND

View consultation documents and provide feedback at:

www.devon.gov.uk/haveyoursay/ or post to the Transport Planning Team, County Hall, Topsham Road, Exeter, EX2 4QD.

If you require more information, or a different format, please email: transportplanning@devon.gov.uk or write to the above address.



Produced in partnership with



DEVON & TORBAY: LOCAL TRANSPORT PLAN 4

Consultation Draft

TORBAY COUNCIL



The Local Transport Plan is the strategic document that sets out the priorities for transport across Devon and Torbay.

The previous LTP3 covered the period 2011-2026. Significant progress has been made in delivering projects in LTP3 including new roads, bus services, railway stations and cycle routes. Increasingly, investment has focused on improving travel choice in Devon and Torbay. Over this period traffic levels have remained stable, rail patronage has increased by 50% and the number of people cycling has increased. The way people access services is also changing, with more home working and shopping online. With advancements in technology and commitments to reduce emissions, we are refreshing the LTP.

The draft LTP4 strategy document sets out the ways that our transport network will be improved while also working towards our net-zero ambitions and wider goals for the county. This is reflected in the following LTP4 objectives:

- Decarbonisation
- Easier Travel
- A Reliable and Resilient Network
- Greater Places for People
- The Place to be Naturally Active
- Unlock Strategic Development

Recognising that there are distinct characteristics and transport challenges depending on where people live, individual strategies have been developed for each of the following areas:

- Exeter
- Torbay
- Rural Devon and Market & Coastal Towns
- Growth Areas, including Barnstaple and Bideford, Heart of Mid Devon, Heart of Teignbridge and Plymouth Urban Fringe.

Projects Completed since LTP3

M5 J27, J28, J29 & J30 upgrades	2012-16
Drakes Trail including Gem Bridge	2012
Redworth Junction, Totnes	2013
Roundswell Roundabout	2014
Holsworthy Agri- Centre Access	2014
Cranbrook & Newcourt Rail Stations	2015
South Devon Link Road	2015
Brixham Road Widening	2015
Blundells Road Enhancement	2016
Exe Estuary Trail completion	2017
Bridge Road Exeter Widening	2018
Torbay Western Corridor	2019
Emergency Active Travel Fund Measures	2020
Dartmoor Line reopening	2021
A3123 & Lynton Cross Roundabout	2022
Magdalen Road Exeter	2023
Marsh Barton Railway Station	2023
Tiverton Eastern Access	2023
North Devon Link Road Upgrade	Onsite

We are now seeking **your views** on this draft strategy to ensure it addresses current priorities and the needs of communities.

LTP4 EVIDENCE AND STRATEGY OVERVIEW

Key Statistics



Devon and Torbay have a combined population of 940,000. This is an increase of 8% in the last decade, and the highest growth of 14% was in East Devon.



Digital access to services is reducing the need to travel, with each individual making 13% less trips in 2019 compared to 2002.



Transport accounts for nearly a third of carbon emissions. 63% of which come from private car and a third from freight.



The majority of freight is moved by road. In 2019, there were an estimated 1.4 million HGV trips carrying 27 million tonnes of goods.



The majority of residents of Exeter do not drive to work, including approximately a third who walk or cycle to work.



Highest proportions of commuting by car use are typically in Torbay and in the Growth Areas.



Bus is the most common form of public transport in Devon and Torbay, with over 24 million bus trips made during 2023/24.



Rail patronage is now 50% higher than in 2010, with over 15 million rail trips made from stations in Devon and Torbay during 2022/23.



The number of injured in road traffic collisions in Devon and Torbay has decreased by 31% since 2013.

Our Network

Reliable and Resilient network: Prioritise maintenance of A and B roads, enhance maintenance of active travel routes and parking systems.

Decarbonisation: Reduce carbon in highway maintenance and construction, through low carbon procurement a carbon design toolkit and upgrading the streetlighting network.

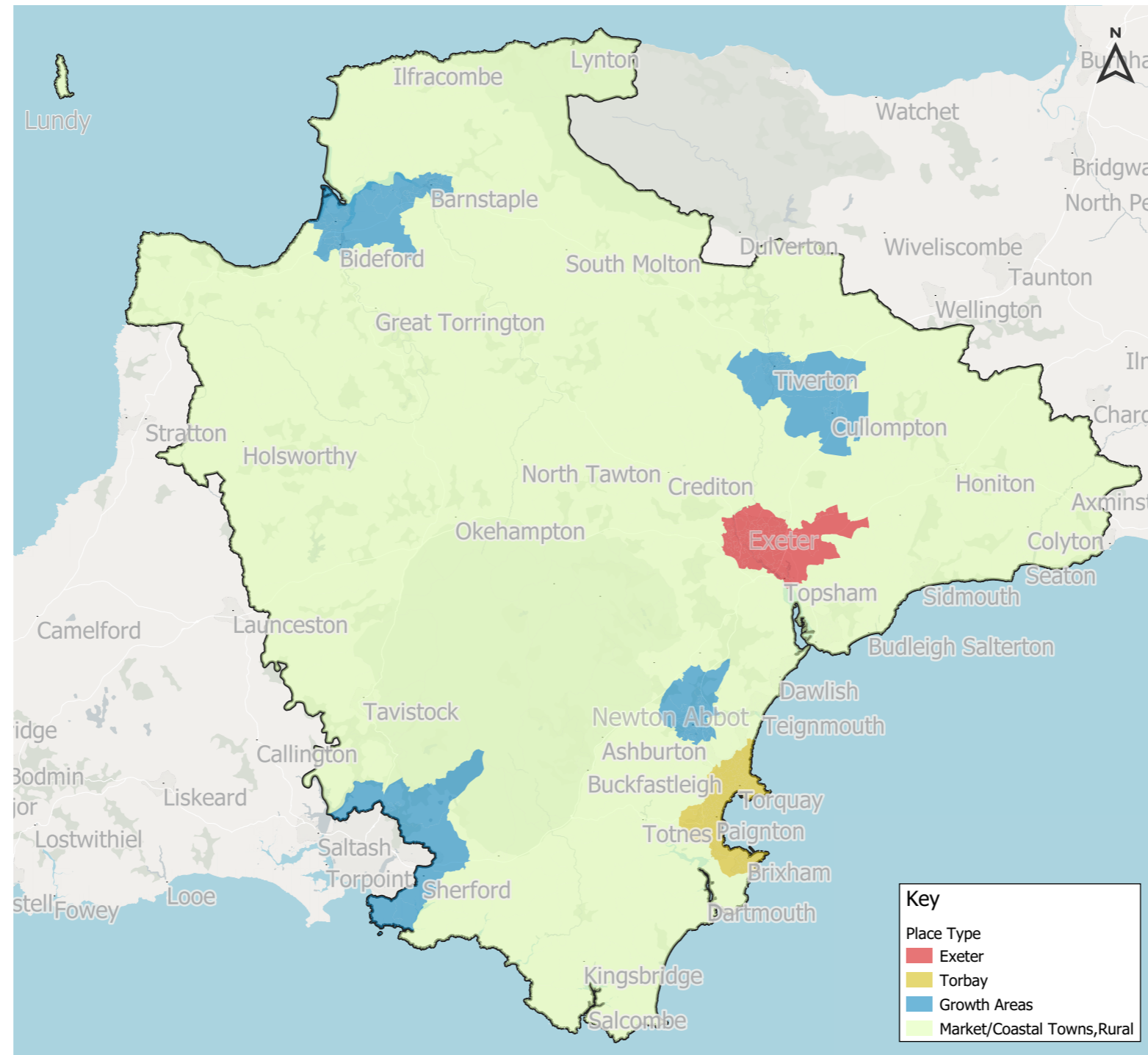
Greater Places for People: Casualty severance reduction program and collaborative working with partners through Vision Zero South West.

Connecting Devon and Torbay

Reliable and Resilient network: Completion of Dawlish Resilience Works, enhance the resilience of M5 J29 – J31 and improved freight facilities.

Easier Travel: Additional long distance rail services, infrastructure to support South Devon Freeport and improved digital access.

Decarbonisation: Support the delivery of alternative fuel stations, electric vehicle charging points and new technologies.



Exeter

Greater Places for People: Reduce dominance of vehicles in the city, create a comprehensive citywide cycle network and unlock Local Plan development.

Easier Travel: A consistent standard of sustainable transport to surrounding towns, including half hourly rail, 15 min bus frequency and cycle trails.

Decarbonisation: Support roll-out of low emission vehicles, a single transport ticketing system and the testing of new measures and/or network changes.

Torbay

Greater Places for People: Revitalise town centres and delivery of Bay trails for local travel and connect to Devon Multi-User trail network.

Easier Travel: New railway station at Edginswell railway station, faster services Exeter/London Add, enhanced multi-modal links and bus services in Torbay, to Newton Abbot, Exeter and Totnes.

Decarbonisation: Delivery of EV charge points and roll of of zero emissions buses.

Growth Areas

Unlock Sustainable Development: Delivery and enhancement of transport links to enable sustainable strategic development.

Easier Travel: More frequent bus and rail services, faster journey times and cleaner vehicles.

Greater place for People: Delivery of LCWIP priorities, Tark and Teign Estuary trail and enhance the attractiveness of town centres.

Rural Devon, Market & Coastal Towns

Easier Travel: Protect and Improve Bus and Rail integration, deliver 'hub and rides' and work with communities and organisations to improve sustainable travel.

Decarbonisation: Delivery of EV charging points, decarbonise rural transport fleets, improve digital access and develop a Shared Modes Strategy.

The Place to be Naturally Active: Expansion of the multi-use trail network, deliver local priorities for 'green lanes' and 20mph communities.